

PS-NX650

Networking/Connectivity

Simultaneous autoswitching protocols EtherTalk Phase II, TCP/IP, Novell IPX

Autosensing ports RJ45 for on-board 10/100 BaseT

Automatic IP configuration

SNMP Support

Printing AppleTalk, Pserver, SMB (peer-to-peer), LPD

Regulatory Approvals

Safety CE Mark, CSA, TUV/GS, UL, CB Scheme

EMC EN55022 Part B (CE marked), FCC Class B, VCCI II

Power Supply and Consumption Autoswitching 110/220 V 50/60 Hz for global use, 7.5 amps @ 100-127 V 3.75 amps @ 200-240 V

Dimensions 21.5 x 18.75 x 7.5 inches

Hardware Intel Pentium III CPU @ 1 GHz, 256 MB SDRAM (up to 512 MB w/ upgrade), 133 MHz system bus, 512k level two cache

EFI Video Interface Card Fiery RIPChips™, ECT Compression for flexible compressions ratios and visually lossless image quality

40 GB hard disk

Internal 40X CD-ROM

Internal 250 MB ZIP drive

Operating System

Windows NT

you can
Canon

PS-NX650

Power to perform

For dependable performance and colour quality with mid-range print engines, count on the PS-NX650.

The PS-NX650 server delivers terrific value to a variety of print environments, from corporate departments and print-for-pay shops to graphic arts studios.



you can
Canon

Canon Inc.
30-2,Shimomaruko 3-Chome,
Ohta-Ku,
Tokyo 146-8501,Japan
www.canon.com

Europe, Africa and Middle East
Canon Europa N.V.
P.O.Box 2262,
1180 EG Amstelveen,
The Netherlands
www.canon-europa.com

© Canon Europa N.V. 2002
English Edition CBSPSNPIPEX

All terms and product names may be trademarks or registered trademarks of their respective owners, and are hereby acknowledged.



Quality and Performance

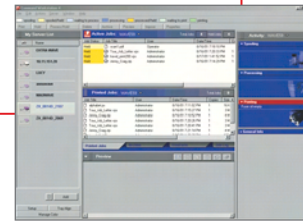
Canon colour controllers are designed for quality and performance from corporate to high volume production environments. Our leading edge products result in greater productivity, improved document management, seamless networking and assured quality of both colour and black and white images. An impressive combination of hardware and software utilities give printing professionals the speed, ease of use and precision needed for the most challenging print jobs.

PS-NX650

PS-NX650 servers deliver the power to perform your most demanding colour print jobs with speed, ease and precision. The PS-NX650 provides fast, dependable output and great value in diverse print environments. It is a high-performance colour server that brings professional-level colour and performance to mid-range printers and copiers. When paired with the optional Fiery Graphic Arts Package, the PS-NX650 becomes a powerful solution for graphic arts professionals.

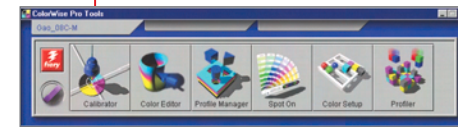
Fiery Command WorkStation™

The Fiery Command WorkStation is designed to make centralised print job management easy. It now automatically identifies Fiery servers on your network, and offers new customisation options so you can choose how to display information about connected Fiery servers most efficiently. It sets the standard for conveniently managing and manipulating digital print jobs.



Fiery ColorWise®

EFI's Fiery colour management software adds flexibility and features that help you achieve the highest quality colour possible on your output devices and accurately simulate the output of other colour devices. ColorWise allows you to add custom and future colour profiles, as well as the optional new Fiery Graphic Arts Package.



Fiery DocBuilder™ Pro™

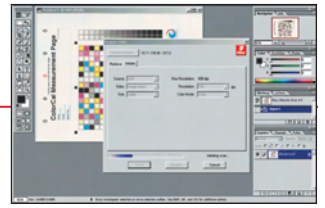
The Fiery DocBuilder Pro application lets you edit and assemble entire documents before RIPping the files. It is the industry's first server-based imposition application based on Adobe System's Portable Document Format (PDF). The improvements in DocBuilder Pro include performance gains of up to 70% and support for mixed page sizes. Doc Builder Pro is an optional application for the PS-NX650.



UTILITIES

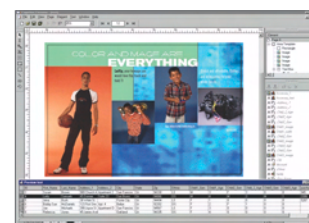
Fiery scan™

Fiery Scan incorporates the PS-NX650 controller as a key element of network and distribution scanning. Scans can be initiated remotely or at the PS-NX650, and stored on the PS-NX650's hard drive. The user can then distribute the scans via email to any email account around the world, download the file directly to the PS-NX650 Hold queue to build documents, or save the scanned file directly to the PC. Scans can also be retrieved via the Fiery WebTools utility, local PS-NX650 interface, or TWAIN plug-in.



Variable Data Printing Solutions

Choose any authoring tool and create master templates and variable information with EFI's flexible and open, end-to-end variable data solution. This solution is compatible with an array of current and emerging VDP languages, including Fiery FreeForm 2, PPML, and Creo VPS.

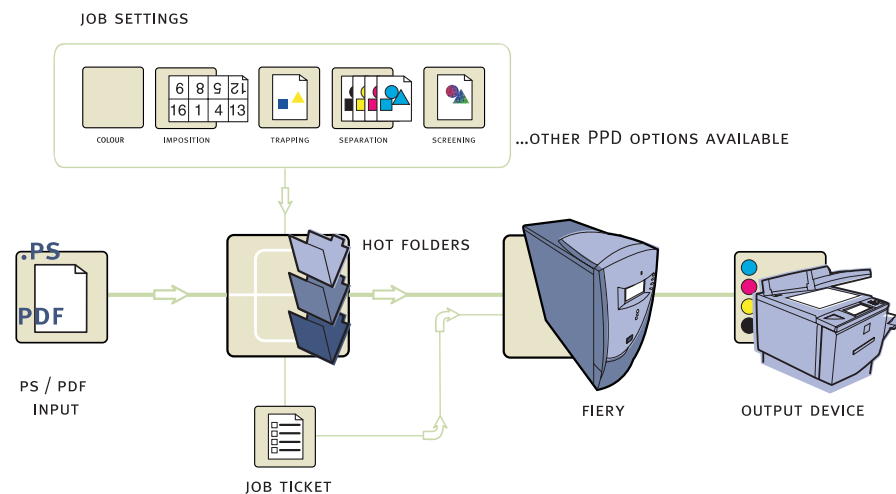


Fiery Graphics Arts Package

The Fiery Graphics Arts Package, optional for the PS-NX650, is a comprehensive suite designed expressly for graphic art professionals who want specialised tools to help them achieve their vision of colour and print quality.

The Package offers:

- Greater colour precision and repeatability
- Support for accurate proofing and simulations
- Accommodation for varied document formats



UTILITIES

Fiery WebTools™

Administer your PS-NX650 server and print jobs through any Java-enabled browser, such as Microsoft Internet Explorer or Netscape Communicator, by using Fiery WebTools. With Fiery WebTools, you can view the current status of jobs, manage jobs with Fiery WebSpooler, and install print drivers and utilities from workstations, among other activities.



UTILITIES

Fiery NetWise™

Accelerate setup and achieve seamless connectivity on all popular network environments with Fiery NetWise. To the standard Ethernet connection and optional Token Ring connection, Fiery NetWise adds Web connectivity for printing via the Internet. NetWise also offers the ability to perform many administrative tasks through email, such as submitting jobs to different Fiery servers, cancelling them, and sending scanned images to remote locations.